



Face Mask Resource Kit **TECH PACK**



TABLE OF CONTENTS

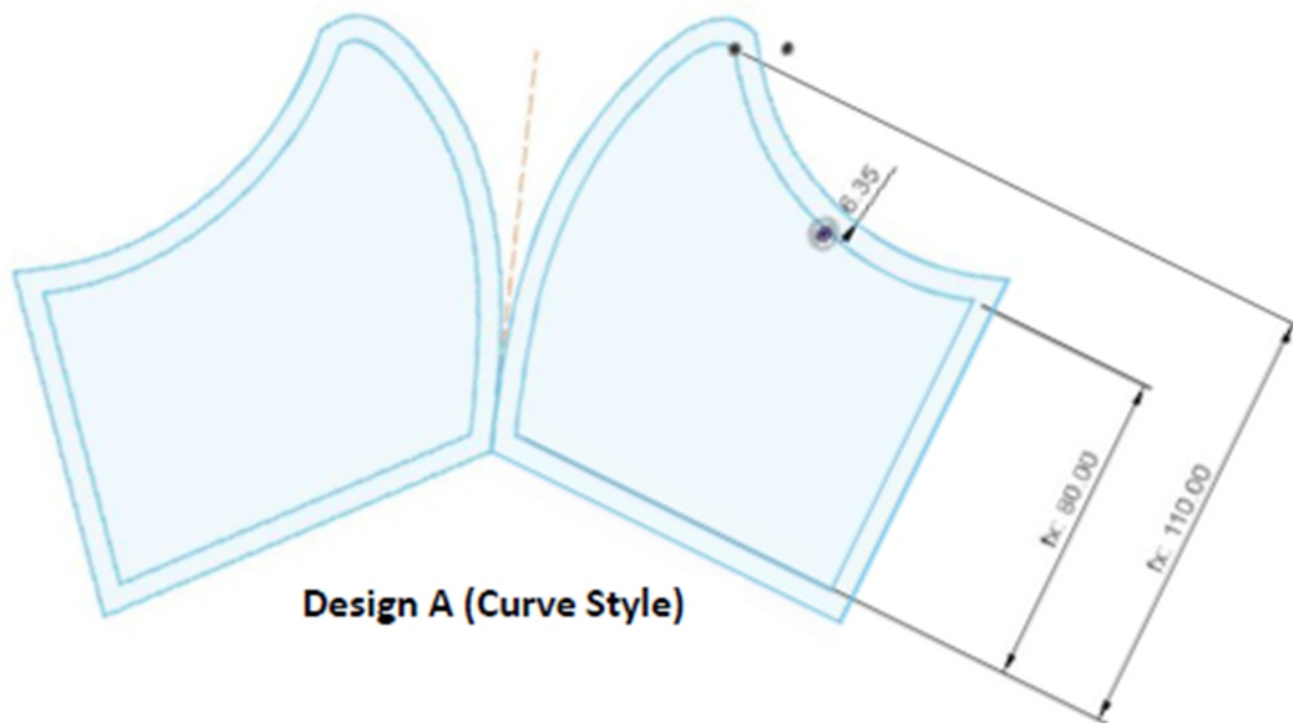
CONTENT	PAGE
A. Design and Actual Picture Reference	1-4
• <i>Face Mask Design A</i>	1
• <i>Face Mask Design B</i>	2
• <i>Face Mask Design C</i>	3
• <i>Face Mask Design D</i>	4
B. Bill of Materials	5
C. Pattern	6-9
• <i>Face Mask Design A</i>	6
• <i>Face Mask Design B</i>	7
• <i>Face Mask Design C</i>	8
• <i>Face Mask Design D</i>	9
D. Layout and Cutting	10-13
E. Printing and Construction Details	14
F. How to Assemble	17

STYLE: FACE MASK DESIGN A

SOURCE : <https://www.instructables.com/id/DIY-Cloth-Face-Mask/>

DESCRIPTION: Curve Style face mask

FABRICS USED: Water repellent fabric - Outer layer,
Absorbent fabric - inner layer



Design A (Curve Style)

REWEAR FACE MASK DESIGN

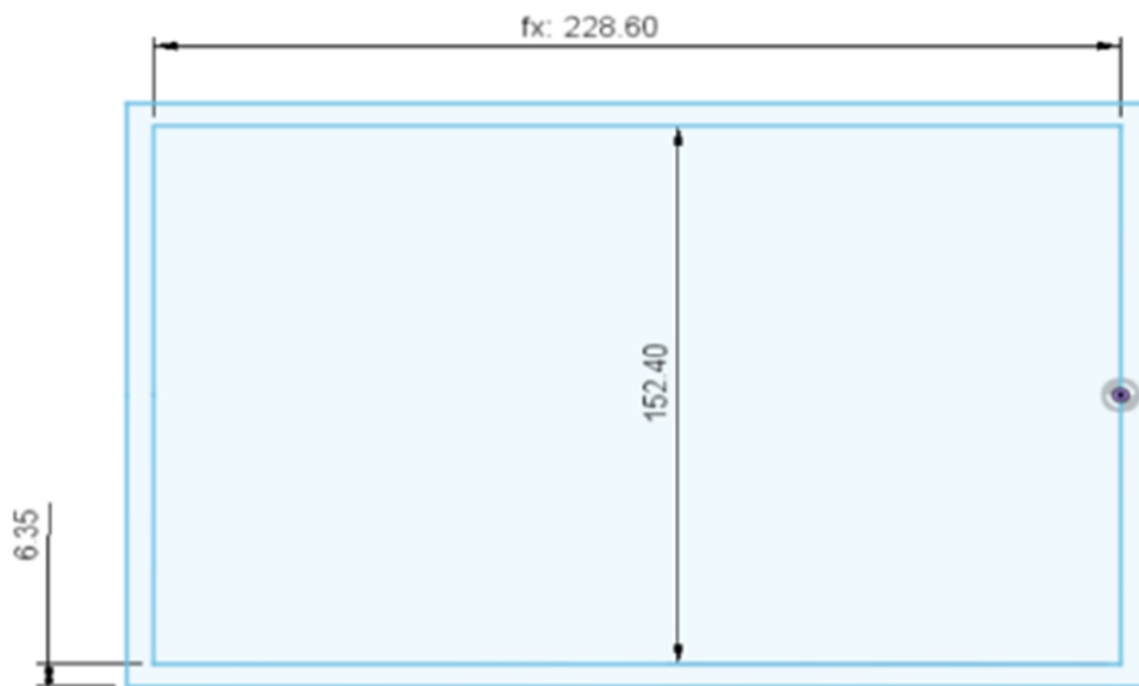


STYLE: FACE MASK DESIGN B

SOURCE : <https://courierpressblogs.com/pdf/howtomakeafacemask.pdf>

DESCRIPTION: Traditional Pleated Rectangle Design

FABRICS USED: Water repellent fabric - Outer layer,
Absorbent fabric - inner layer



Design B (Traditional Rectangle)
REWEAR FACE MASK DESIGN



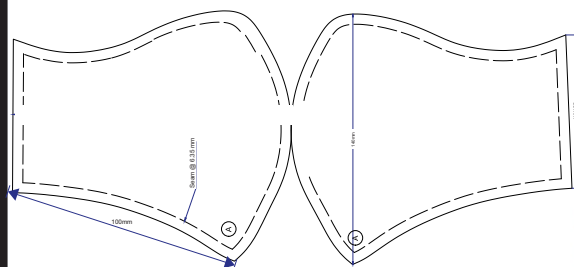
STYLE: FACE MASK DESIGN C

SOURCE : <https://www.instructables.com/id/DIY-Cloth-Face-Mask/>

DESCRIPTION: RE|wear Mask
2 Piece 4 Layered Curved Style face mask

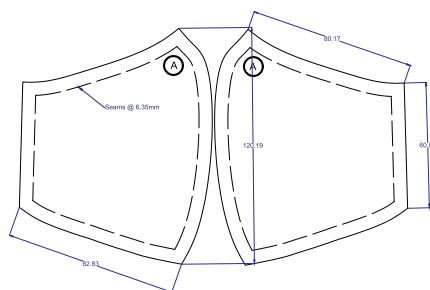
FABRICS USED: Water repellent fabric - Outer layer,
Absorbent fabric - inner layer

**Quick Response on the Production of REwear (Re-useable, Washable and Re-wearable) Face Masks Made Smart
Fabrics used underwent the REwear finishing and Test Protocol**



Outer layer: 100mm x 140mm x 80mm
Inner layer: 90mm x 120mm x 60mm

DESIGN C Adult's Size
Breathable Curve



DESIGN C Child's Size
Breathable Curve



2 Layers
Mask
(1st Piece)

2 Layers
Insert
(2nd Piece)



2 Layers
Insert
(1st Piece)

2 Layers
Mask
(2nd Piece)



STYLE: FACE MASK DESIGN D

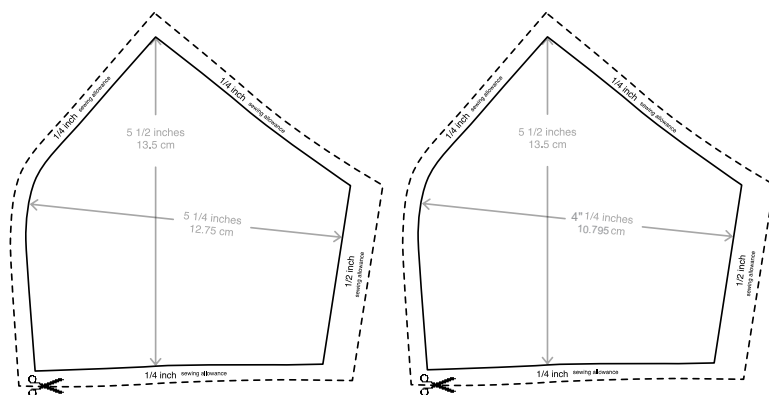
SOURCE :

<https://www.facebook.com/632587228/posts/10158054692292229/?d=n>

DESCRIPTION: Santi Obcena's Facemask Design

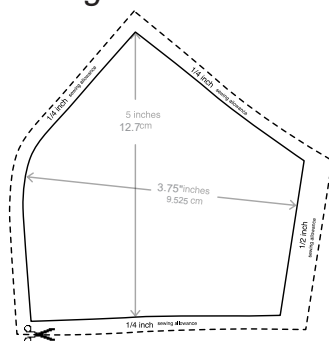
FABRICS USED:

Water repellent fabric - Outer layer,
Absorbent fabric - inner layer



Outer and Lining

Pocket



Filter



https://assets.rappler.com/C2A520D4C19445A88F8756D07696304B/img/8FD9CA75F5974EE8B71100C97AD32EE7/santiobcenamasks_8FD9CA75F5974EE8B71100C97AD32EE7.jpg



Santi Obcena wearing his facemask design as shared in his Youtube tutorial

STYLE: FACE MASK

STYLE & DESCRIPTION:

- A - Curve Style face mask
- B - Traditional Pleated Rectangle Design
- C - 2 Piece 4 Layered Curved Style face mask, REwear Mask
- D- Santi Obcena's Facemask Design

SOURCES:

<https://www.instructables.com/id/DIY-Cloth-Face-Mask/>
<https://courierpressblogs.com/pdf/howtomakeafacemask.pdf>
<https://www.instructables.com/id/DIY-Cloth-Face-Mask/>
<https://www.facebook.com/632587228/posts/10158054692292229/?d=n>

NOTE: Design C: Fabrics used underwent the REwear finishing and Test Protocol

APPLICABLE TO ALL FACE MASK DESIGNS

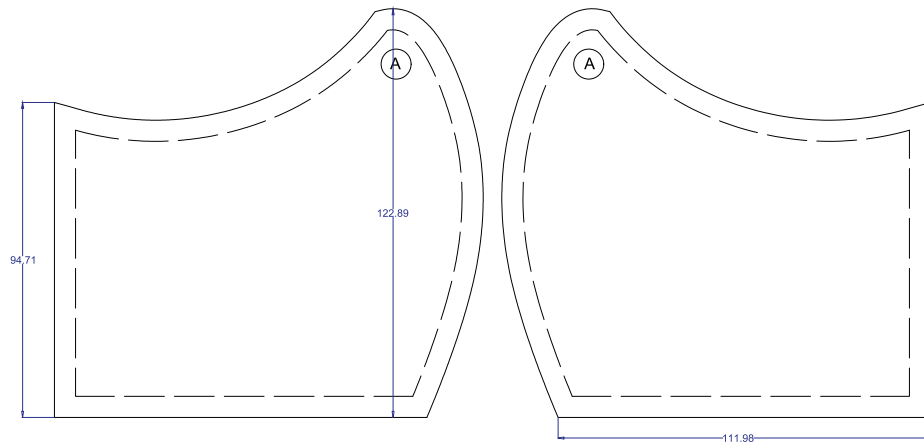
ITEMS	PLACEMENT	COLOR	SPECIFICATIONS
Outer fabric	Outer layer	Any available	<i>Must have a water-repellent finish</i>
Inner Fabric	Lining	Any available	<i>Must be absorbent and breathable</i>
Fabric	Separate Panel	Any available	<i>Must be absorbent and breathable</i>
1/4" Elastic	Over ears or Over the head	White or any available	<i>If placed on sides - each strip is approx 7" If place over the head - each strip is approx 13"</i>
Thread	Seams	DTM (Dye to Match)	<i>Use Tex size between Tex 24 to 30 only (or Ticket 80 to Ticket 120)</i>

STYLE: FACE MASK DESIGN A

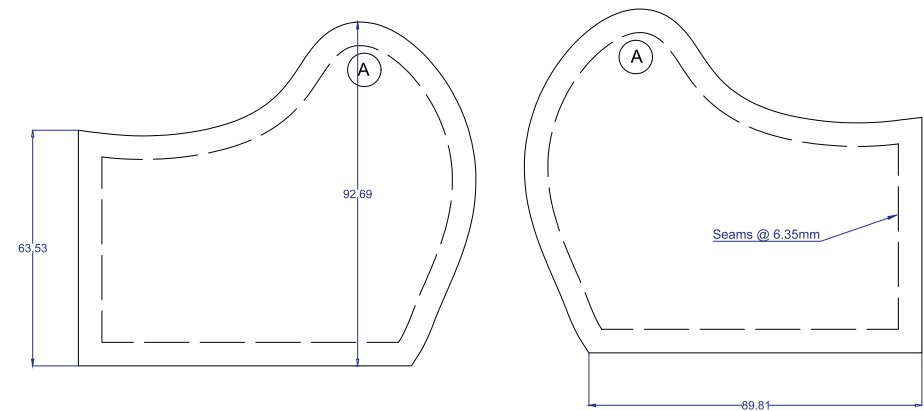
SOURCE : <https://www.instructables.com/id/DIY-Cloth-Face-Mask/>

DESCRIPTION: Curve Style face mask

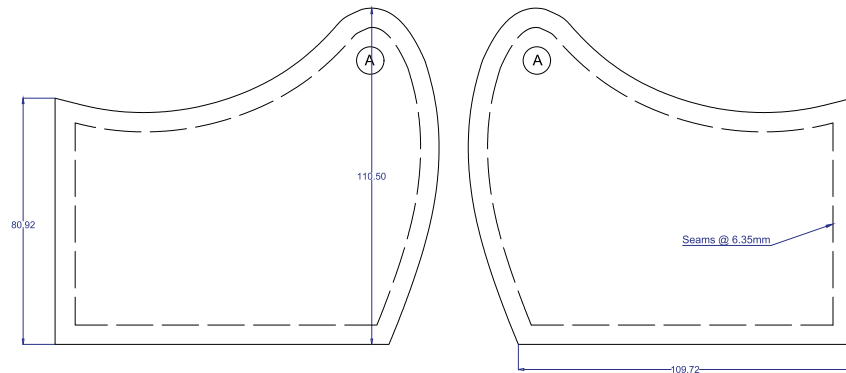
FABRICS USED Water repellent fabric - Outer layer,
Absorbent fabric - inner layer



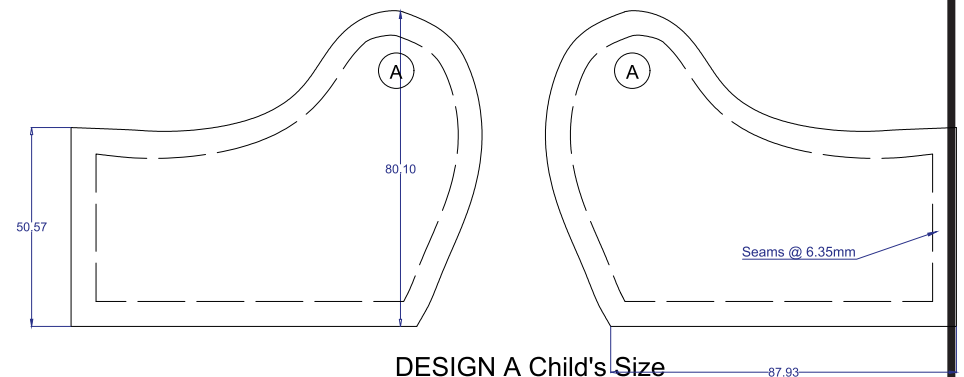
DESIGN A Adult's Size
Breathable Curve
Outer Piece



DESIGN A Child's Size
Breathable Curve
Outer Piece



DESIGN A Adult's Size
Breathable Curve
Inner Piece



DESIGN A Child's Size
Breathable Curve
Inner Piece

*Dimensions are in millimeters

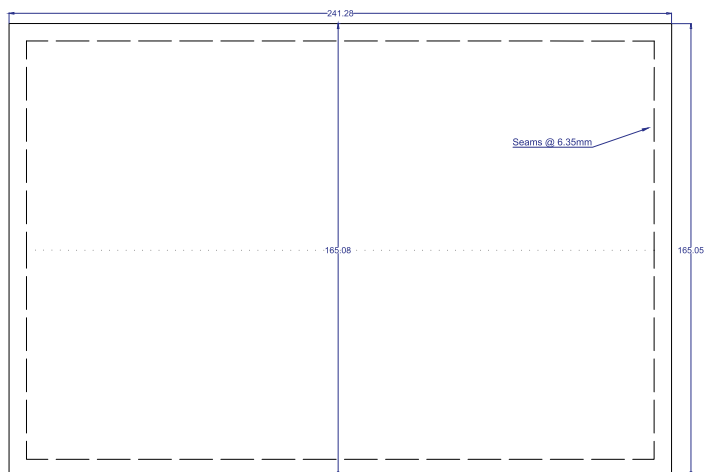
**Use an A4 Size Paper (297mm x 210mm) and print in Actual Size

STYLE: FACE MASK DESIGN B

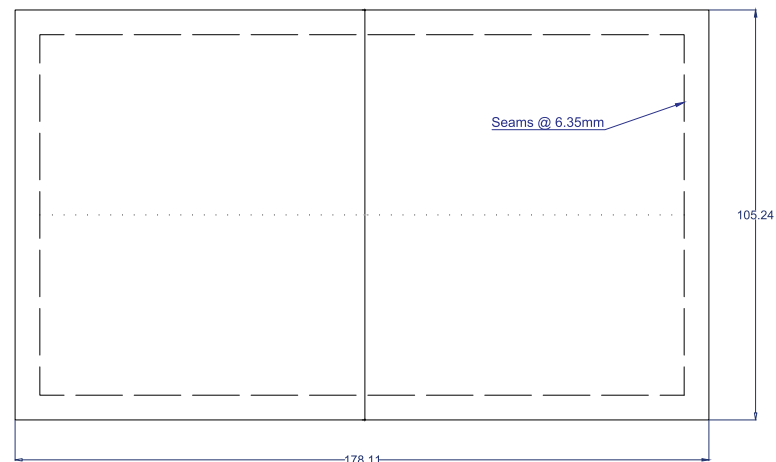
SOURCE : <https://courierpressblogs.com/pdf/howtomakeafacemask.pdf>

DESCRIPTION: Traditional Pleated Rectangle Design

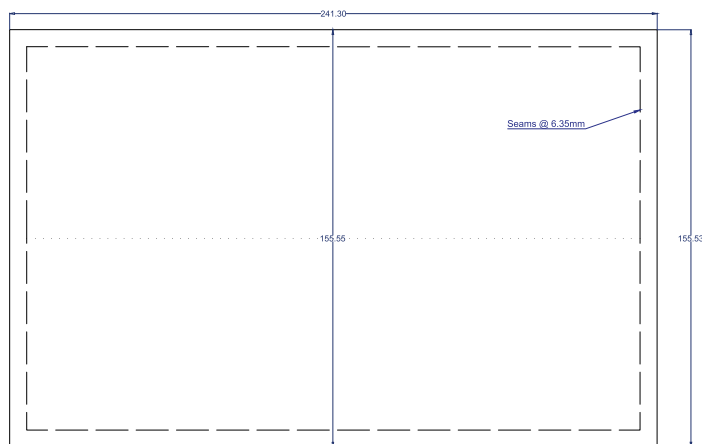
FABRICS USED: Water repellent fabric - Outer layer,
Absorbent fabric - inner layer



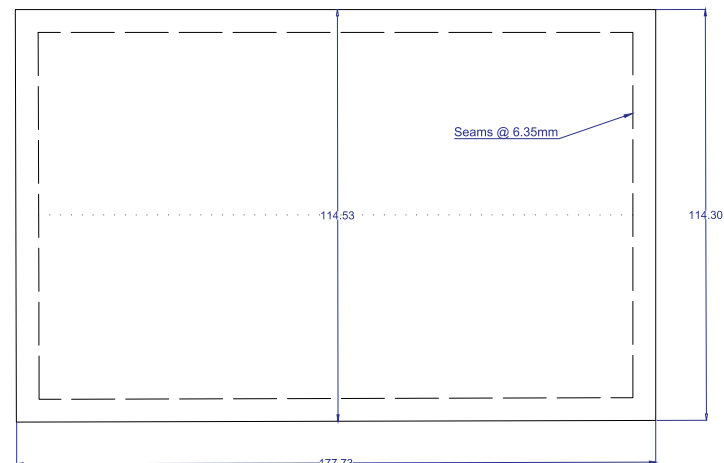
DESIGN B Adult's Size
Traditional Rectangle
Outer Piece



DESIGN B Child's Size
Traditional Rectangle
Inner Piece



DESIGN B Adult's Size
Traditional Rectangle
Inner Piece



DESIGN B Child's Size
Traditional Rectangle
Outer Piece

*Dimensions are in millimeters

*Use an A4 Size Paper (297mm x 210mm) and print in Actual Size

STYLE: FACE MASK DESIGN C

SOURCE : <https://www.instructables.com/id/DIY-Cloth-Face-Mask/>

DESCRIPTION: REwear Mask
2 Piece 4 Layered Curved Style face mask

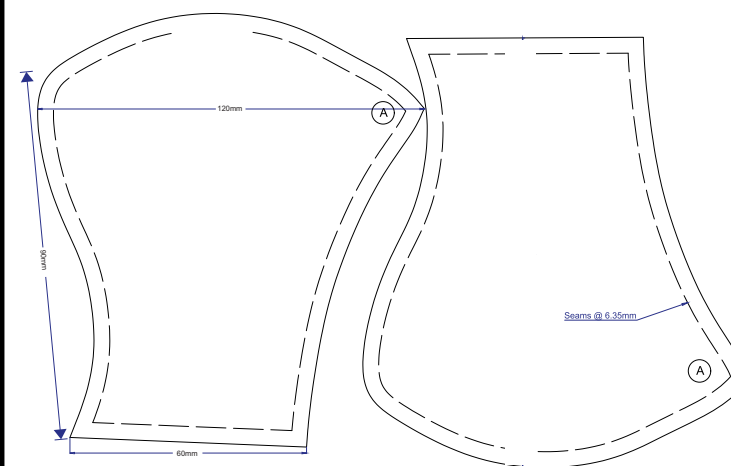
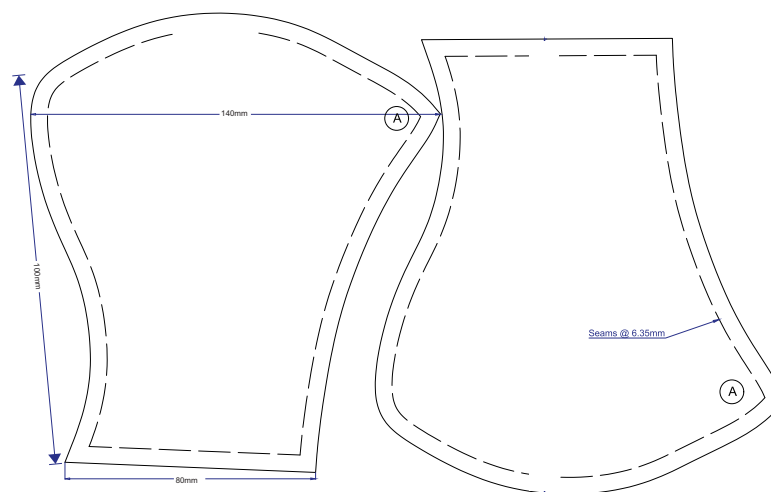
FABRICS USED: Water repellent fabric - Outer layer,
Absorbent fabric - inner layer

Quick Response on the Production of REwear (Re-useable, Washable and Re-wearable) Face Masks Made Smart
Fabrics used underwent the REwear finishing and Test Protocol

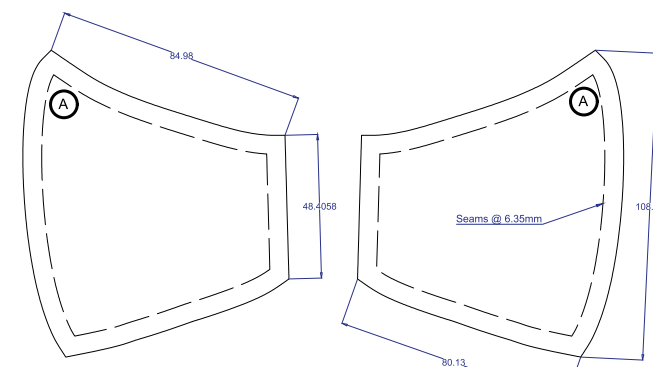
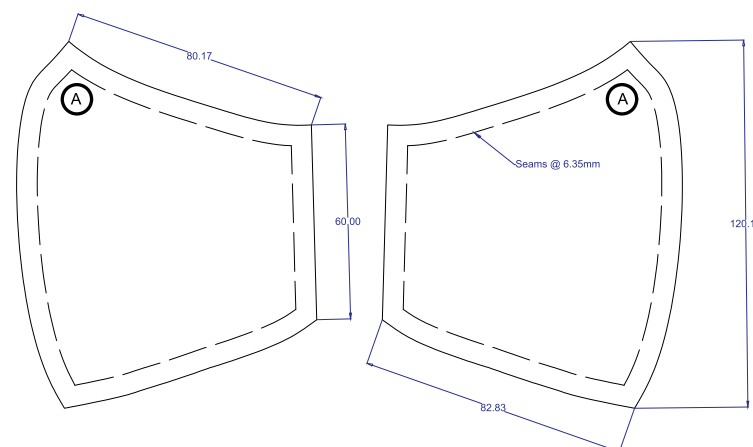
Outer Piece

Inner Piece

DESIGN C Adult's Size



DESIGN C Child's Size



*Dimensions are in millimeters

**Use an A4 Size Paper (297mm x 210mm) and print in Actual Size

STYLE: FACE MASK DESIGN D

SOURCE :

<https://www.facebook.com/632587228/posts/10158054692292229/?d=n>

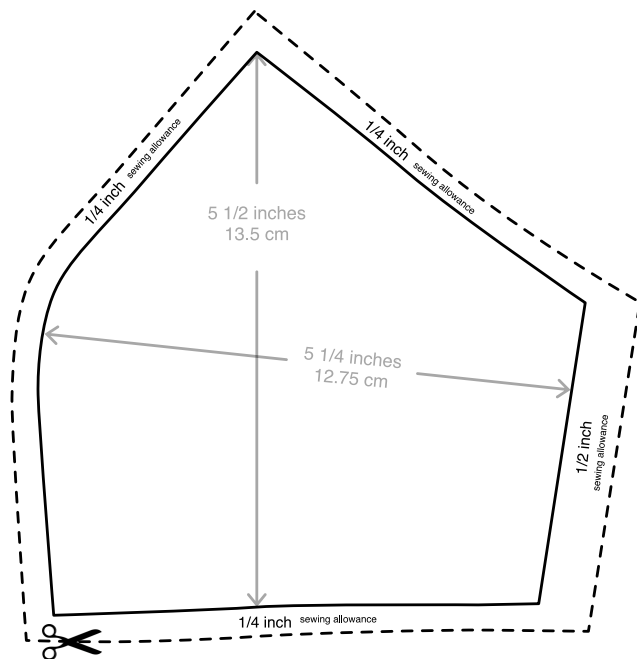
DESCRIPTION: Santi Obcena's Facemask Design

FABRICS USED:

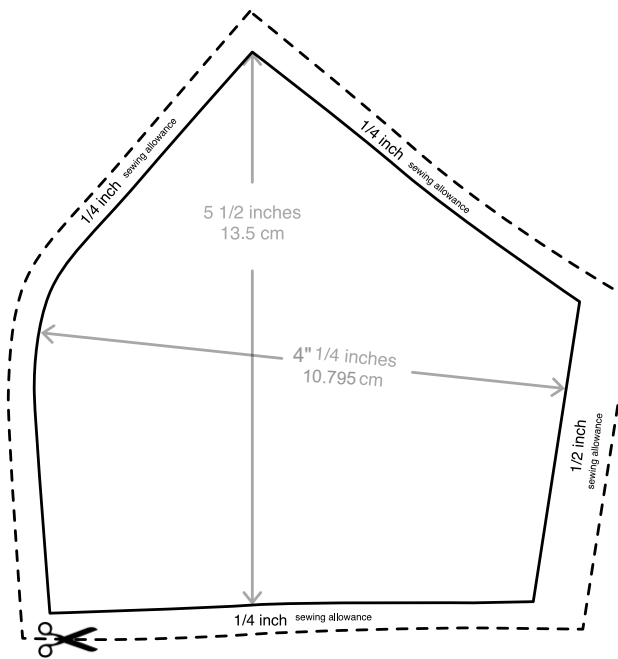
Water repellent fabric - Outer layer,
Absorbent fabric - inner layer

MASK PROTOTYPE PATTERN

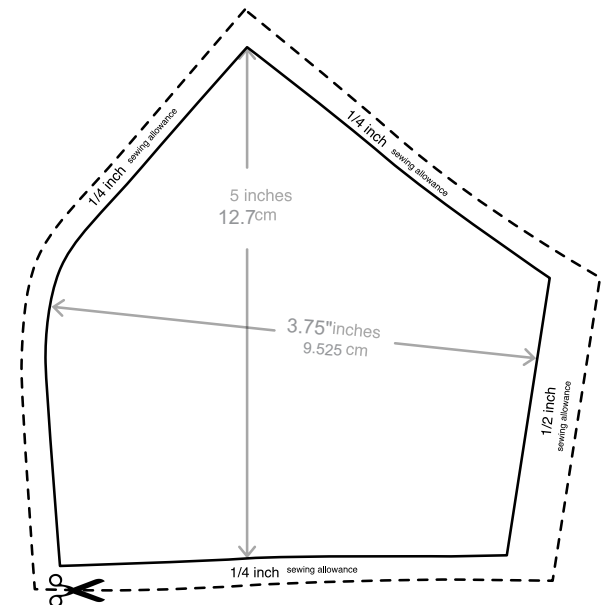
developed by Santi Obcena



Outer and Lining



Pocket



Filter

STYLE: FACE MASK DESIGN A

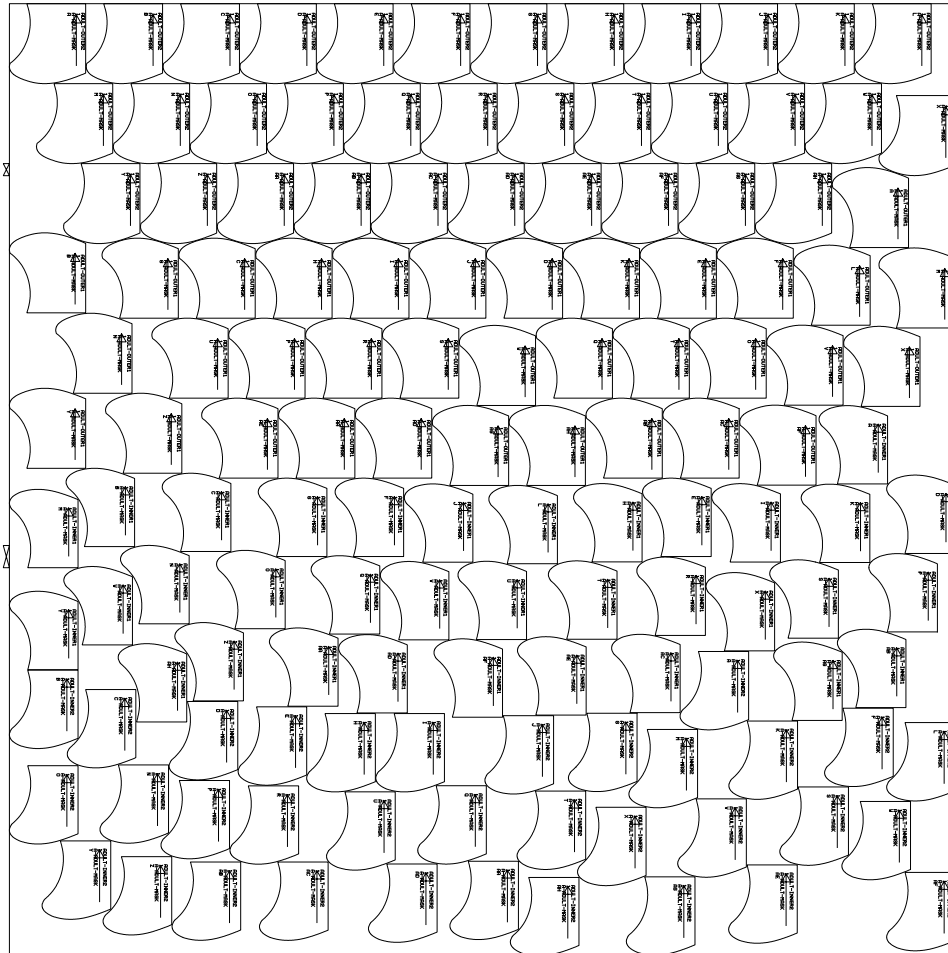
SOURCE : <https://www.instructables.com/id/DIY-Cloth-Face-Mask/>

DESCRIPTION: Curve Style face mask

FABRICS USED Water repellent fabric - Outer layer,
Absorbent fabric - inner layer

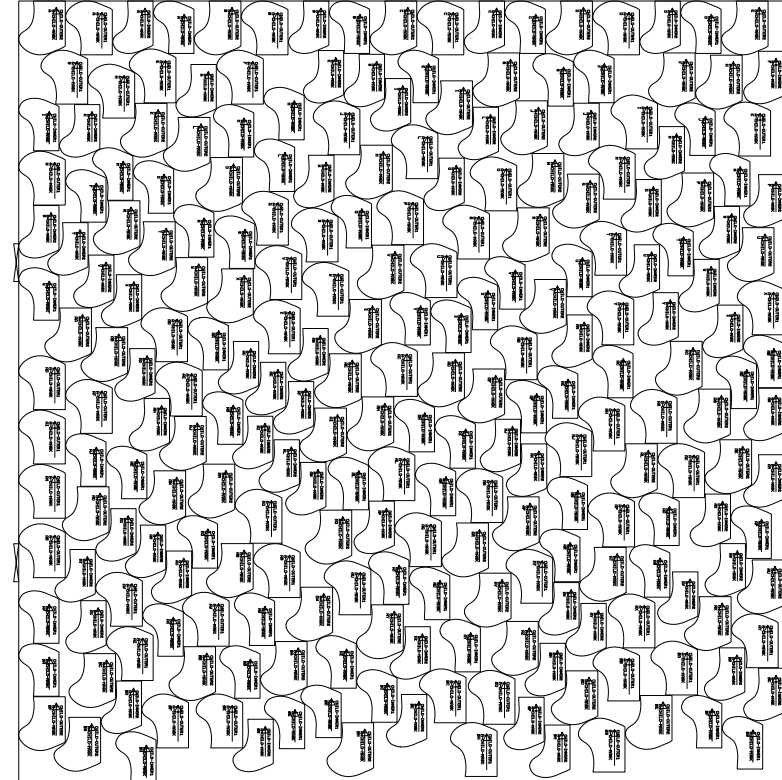
ADULT

A-ADULT-MASK-01 B=152.400cm L=1.534m
EFF=67.719%A-ADULT-MASK(34(1))



CHILD

A-CHILD-MASK-01 B=152.400cm L=1.560m
EFF=69.151%A-CHILD-MASK(60(1))



FABRIC	Cotton Jersey	PLACEMENT	Outer / Lining
LENGTH/ LAYER *A - Adult *C- Child	A -1.534 m C - 1.560 m	FABRIC WIDTH	1.524 m (60")
OUTPUT / LAYER (ADULT)	34 PCS	OUTPUT / LAYER (KIDS)	60 PCS

DEPENDING ON DESIGN SELECTED, THE WIDTH & LENGTH OF THE FABRIC, EFFICIENCY SHOULD BE MAXIMIZED UPON LAYOUT AND CUTTING

STYLE: FACE MASK DESIGN B

SOURCE : <https://courierpressblogs.com/pdf/howtomakeafacemask.pdf>

DESCRIPTION: Traditional Pleated Rectangle Design

FABRICS USED	Water repellent fabric - Outer layer, Absorbent fabric - inner layer
---------------------	---

ADULT

B-ADULT-MASK-01 B=152.400cm L=1.453m
EFF=94 345%B-ADULT-MASK(27(1))

[illegible]

CHILD

B-CHILD-MASK-01 B=152.400cm L=1.432m
EFF=93.378%B-CHILD-MASK(52(1))

	FABRIC	Cotton Jersey Fabric	PLACEMENT	Outer / Lining
	LENGTH/ LAYER *A - Adult *C- Child	A-1.453 m C- 1.432 m	FABRIC WIDTH	1.524 m (60")
	OUTPUT / LAYER (ADULT)	27 pcs	OUTPUT / LAYER (KIDS)	52 pcs

DEPENDING ON DESIGN SELECTED, THE WIDTH & LENGTH OF THE FABRIC, EFFICIENCY SHOULD BE MAXIMIZED UPON LAYOUT AND CUTTING

STYLE: FACE MASK DESIGN C

SOURCE : <https://www.instructables.com/id/DIY-Cloth-Face-Mask/>

DESCRIPTION: RE|wear Mask
2 Piece 4 Layered Curved Style face mask

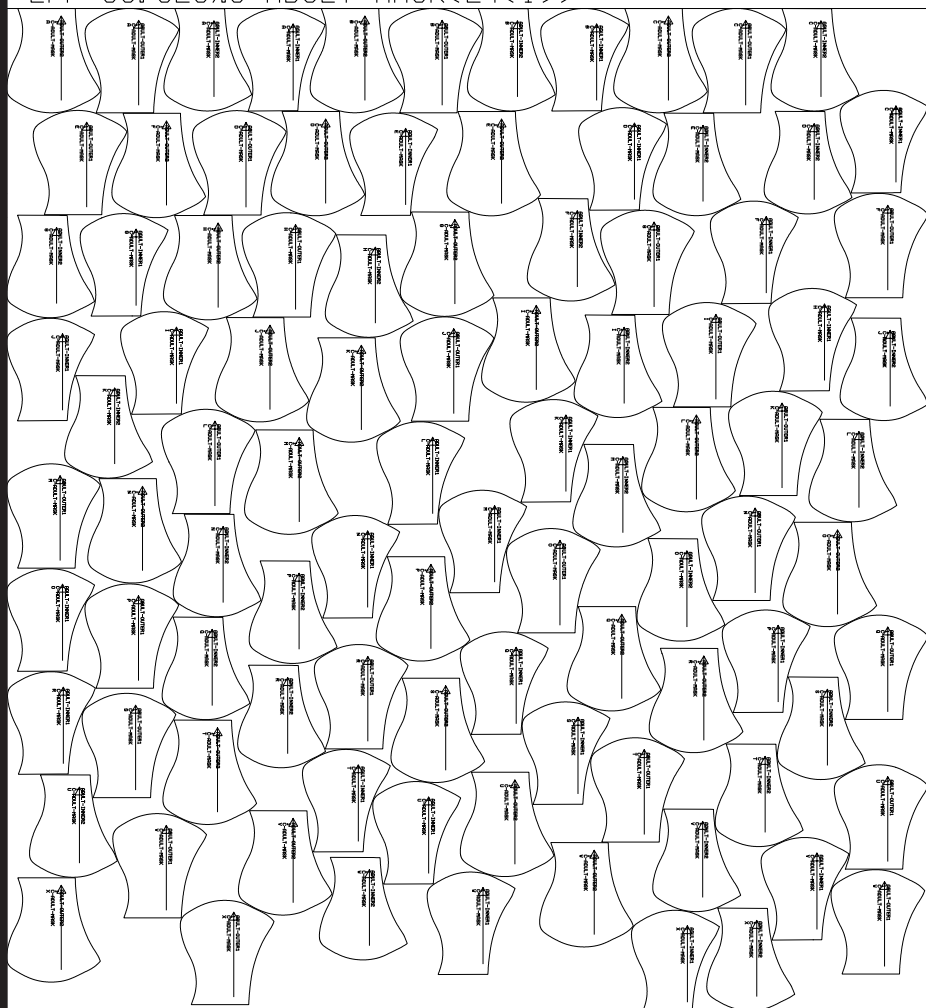
FABRICS USED: Water repellent fabric - Outer layer,
Absorbent fabric - inner layer

Quick Response on the Production of REwear (Re-useable, Washable and Re-wearable) Face Masks Made Smart

Fabrics used underwent the REwear finishing and Test Protocol

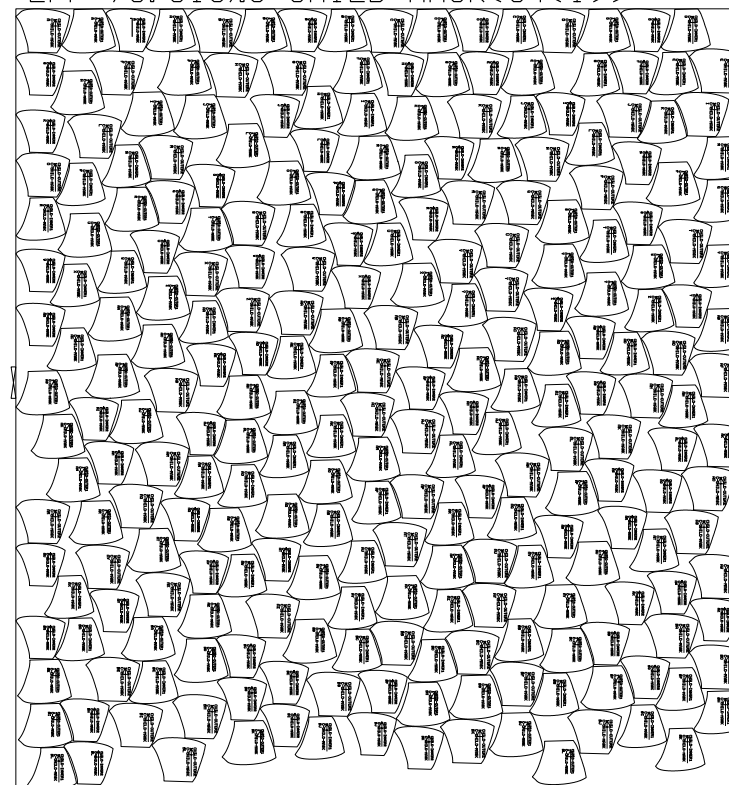
ADULT

C-ADULT-MASK-01 B=152.400cm L=1.661m
EFF=68.323% C-ADULT-MASK(24(1))



CHILD

C-CHILD-MASK-01 B=152.400cm L=1.636m
EFF=73.615% C-CHILD-MASK(64(1))



*A - Adult
*C- Child

FABRIC	Cotton Jersey	PLACEMENT	Outer / Lining
LENGTH/ LAYER	A - 1.661m C- 1.636 m	FABRIC WIDTH	1.524 m (60")
OUTPUT / LAYER (ADULT)	12 PCS	OUTPUT / LAYER (KIDS)	32 PCS

DEPENDING ON DESIGN SELECTED, THE WIDTH & LENGTH OF THE FABRIC, EFFICIENCY SHOULD BE MAXIMIZED UPON LAYOUT AND CUTTING

STYLE: FACE MASK DESIGN D

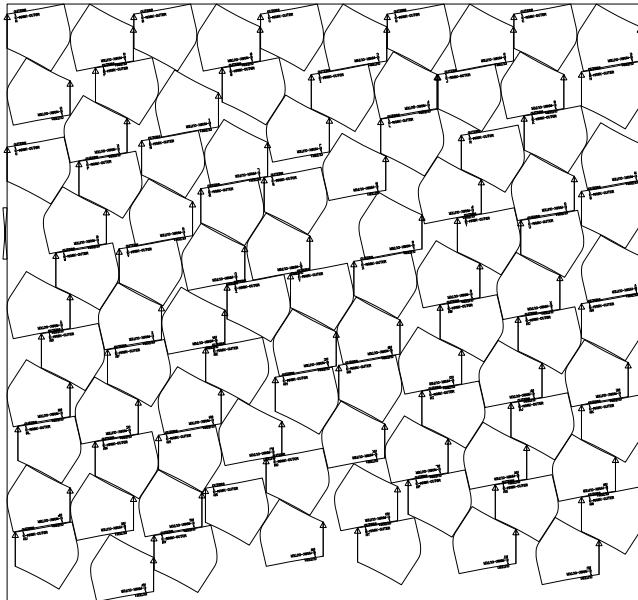
SOURCE :

<https://www.facebook.com/632587228/posts/10158054692292229/?d=n>

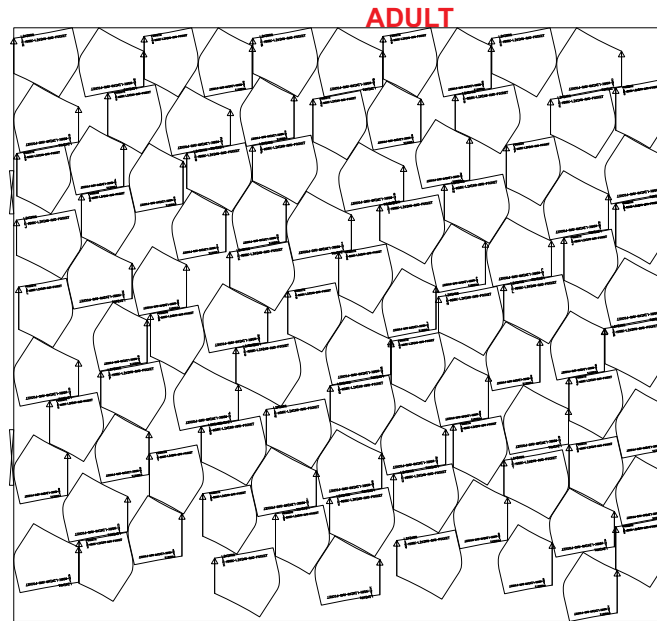
DESCRIPTION: Santi Obcena's Facemask Design

FABRICS USED:

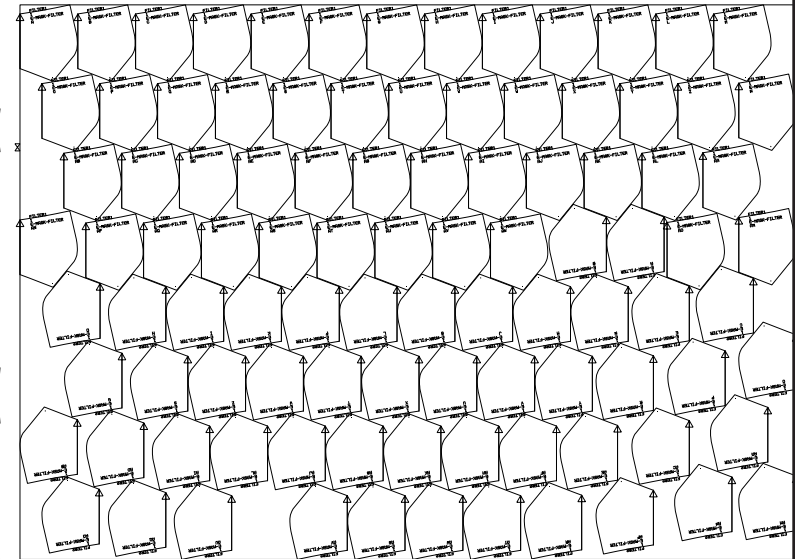
Water repellent fabric - Outer layer,
Absorbent fabric - inner layer



E-MASK-OUTER-01 B=152.400cm L=1.430m
EFF=76.316%E-MASK-OUTER(48(1))



E-MASK-LINING-AND-POCKET-01 B=152.400cm L=1.380m
EFF=73.930%E-MASK-LINING-AND-POCKET(24(1))



E-MASK-FILTER-01 B=152.400cm L=1.089m
EFF=78.279%E-MASK-FILTER(49(1))

FABRIC	Water Repellent
PLACEMENT	Outer
LENGTH /LAYER	1.430 m
FABRIC WIDTH	1.524 m (60")
OUTPUT/LAYER	48 pcs (Outer)

FABRIC	Cotton Fabric
PLACEMENT	Lining/Pocket
LENGTH /LAYER	1.380 m
FABRIC WIDTH	1.524 m (60")
OUTPUT/LAYER	24pcs (Lining & Pocket)

FABRIC	Cotton Fabric
PLACEMENT	Filter
LENGTH/LAYER	1.089 m
FABRIC WIDTH	1.524 m (60")
OUTPUT/LAYER	49 pcs (Filter)

TOTAL FINISHED PRODUCT: 24 pcs of MASK WITH COMPLETE SET (WITH POCKET & FILTER)
24 pcs of MASK without POCKET but with FILTER

DEPENDING ON DESIGN SELECTED, THE WIDTH & LENGTH OF THE FABRIC, EFFICIENCY SHOULD BE MAXIMIZED UPON LAYOUT AND CUTTING

STYLE: FACE MASK

STYLE & DESCRIPTION:

- A - Curve Style face mask
- B - Traditional Pleated Rectangle Design
- C - 2 Piece 4 Layered Curved Style face mask, REwear Mask
- D- Santi Obcena's Facemask Design

SOURCES:

<https://www.instructables.com/id/DIY-Cloth-Face-Mask/>
<https://www.instructables.com/id/DIY-Cloth-Face-Mask/>
<https://courierpressblogs.com/pdf/howtomakeafacemask.pdf>
<https://www.facebook.com/632587228/posts/10158054692292229/?d=n>

I.PRINT Patterns

Print out PDF paper pattern piece(s) at actual size on 8.5" x 11" paper, legal or A4 sized paper.

DESIGN A print file is a curved style pattern. It has 2 pieces: A (left) and B (right). Both for adult and child
 DESIGN B print file is a traditional regular rectangular shaped pattern. Adult and child variations are available.
 DESIGN C print file is the REwear mask design. It has as a breathable curve.
 It has 2 pieces: A (left) and B (right). Both for adult and child.
 DESIGN D print file is Santi Obcena's face mask design.

NOTES IN PRINTING THE PATTERNS:

It is important to set your printer in the landscape orientation, as portrait orientation will result to small, unscaled version of the pattern.

For those without a printer - open up the gridded pattern PDF so you can draw it yourself

II. CONSTRUCTION

All seams will be using **plain** top stitch, ensuring lock stitching for reinforcement.

NOTE: Design C: Fabrics used underwent the REwear finishing and Test Protocol

STYLE: FACE MASK

SOURCE :

<https://www.instructables.com/id/DIY-Cloth-Face-Mask/>
<https://courierpressblogs.com/pdf/howtomakeafacemask.pdf>

DESCRIPTION: A - Curve Style face mask
 B - Traditional Pleated Rectangle Design

FABRICS USED:

Water repellent fabric - Outer layer,
 Absorbent fabric - inner layer

III. ASSEMBLY

DESIGN A

1. Lay your fabrics making sure right of side of fabric are facing together.
2. Pin patterns folded fabrics and cut two A (left outer and inside) and two B (right outer and inside).
3. Sew center curves of outer layers, right sides together.
4. Sew center curves of lining layers, right side together.
5. Clip the curved seam at about 1/2" intervals but not down to the seam.
6. Make the sleeves for the elastic - With wrong side up, fold angled, stitch ends of outer layer up to marked line in the pattern. Stitch down.
 This applies to lining of mask as well.
7. Sew all the way around the edge, except for a 1.5" gap on the bottom edge.
8. From the 1.5" gap, turn right side out. And iron press.
9. Stitch along all the folds on each side, 1/8" from fold. This will assure both layers stay in place during laundering.
10. Feed elastic through the sleeves (approx. 7" per side). A wire needle or small safety pin can help feed it through.
11. Make sure that the fit of the mask is snug by tucking loops behind ears.

DESIGN B

1. Layer your fabrics making sure right of side of fabric are together. You may add additional later of thin fabric as barrier for protection.
2. Sew the elastic in the corners on both sides at an angle. You may choose either the outer or inner part of the mask when you attach the elastics. Make sure that the elastic loops should be facing towards center and not twisted.
3. Top stitch and reinforce the stitching as this is important and critical when worn.
4. Place your other fabric face down, making sure right side is facing each other.
5. Making sure that the elastic is in the inside, wrong side facing up, sew bottom part leaving an opening of about 1.5" to 2".
6. Trim the four (4) corners making sure that seams are not affected.
7. From the opening, turn inside out.
8. When the mask is on its right side, fold the mask horizontally on its center this will be your mark to do a fold for the first pleat.
9. From that centerline, try to fold the mask in about 1/4". You may press it with an iron for stability.
10. Repeat the folding process on top and bottom of the created fold. Creating 3 folds. This will now be your pleats
 . (When worn, this will form a cup that will protect your nose and chin).
11. Top stitch these folds.
12. For good measure, sew around the edge of the mask.

STYLE: FACE MASK DESIGN C

SOURCE : <https://www.instructables.com/id/DIY-Cloth-Face-Mask/>

DESCRIPTION:  Mask
2 Piece 4 Layered Curved Style face mask

FABRICS USED: Water repellent fabric - Outer layer,
Absorbent fabric - inner layer

Quick Response on the Production of REwear (Re-useable, Washable and Re-wearable) Face Masks Made Smart Fabrics used underwent the REwear finishing and Test Protocol

DESIGN C

OUTER PANEL

1. Layer your fabrics right sides together.
2. Pin pattern piece to folded fabrics (outer and lining). Cut 4.
3. Sew center curves of outer layers, right sides together.
4. Sew center curves of lining layers, right sides together.
5. Clip the curved seam at about ½" intervals but not down to the seam.
6. Make the sleeves for the elastic - With wrong side up, fold angled, stitch ends of outer layer up to marked line in the pattern. Stitch down.
This applies to lining of mask as well.
7. Sew all the way around the edge, except for a 1.5" gap on the bottom edge.
8. Turn right side out and press.
9. Feed elastic through the sleeves (approx. 7" per side if to be placed through the ears if through the head approx 13").
A wire needle or small safety pin can help feed it through.
10. Make sure that the fit of the mask is snug by tucking loops behind ears.

INNER PANEL

Cut whatever filter material to fit as needed using INNER PIECE PATTERN FROM DESIGN C making sure that it will not hinder you from normal breathing or talking.

1. After cutting, you may proceed with the instructions 3-5 from assembly of OUTER PANEL
2. Sew all the way around the edge, except for a 1.5" gap on the bottom edge.
3. Turn right side out, top stitch to close the 1.5" gap on the bottom edge and press.

STYLE: FACE MASK DESIGN D

SOURCE :

<https://www.facebook.com/632587228/posts/10158054692292229/?d=n>

DESCRIPTION: Santi Obcena's Facemask Design

FABRICS USED:

Water repellent fabric - Outer layer,
Absorbent fabric - inner layer

DESIGN D

CUTTING and PRE-ASSEMBLY

1. Layer your fabrics right sides together.
2. Pin pattern piece to folded fabrics (outer, lining & filter). Cut 2 of water repellent fabric. Cut 2 of pocket lining. Cut 2 of Lining. Cut 2 for filter.
3. Sew center curves of outer layers, top stitch right side together.
4. Sew center curves of lining layers, right side together.
5. Sew center curves of filter right sides together. Edges shall be sewn and folded in all sides.

NOTE: Fold sides and top stitch.

POCKET

6. Stack the pocket fabric lining with main lining and sew 1/4" on top and on the bottom. (This will be the place to insert the filter).

ASSEMBLY OF FRONT LAYER AND LINING WITH POCKET

7. Stack the water repellent fabric to the lining with fabric. Make sure its right side to ride side. (Ride side water repellent and pocket insert).
8. Sew on top and sew on bottom (1/4").

ATTACHMENT OF ELASTIC BANDS

9. Cut 7" in length of elastic bands. Make sure to burn edges of the bands to avoid fraying.
10. Place and insert the elastics on the corners of the mask, forming a U. Making sure curve is at oriented towards the middle.
11. Stitch on the top and bottom on the right side and just sew where you place the elastic on top and bottom corner leaving an opening on the left side.
11. With the left side open, turn the mask inside out.
12. Top stitch to close and reinforce.